

KENWOOD

NEXEDGE®

NX-740(H)/840(H)

NEXEDGE® VHF/UHF Digital & FM Mobile Radios

NXDN® **FleetSync®**

● GENERAL FEATURES

- 50 W (136-174 MHz) Model
- 45 W (450-520 MHz) Model
- Max. 16 CH per Zone
- 2 Conventional Zones
- 2-Digit LED Channel Display
- Function/Status LED Dots
- Backlit Keys
- Transmit /Busy / Call Alert LED
- Blue Function/Status LED
- 9 Programmable Function Keys
- Emergency / AUX Key
- 4W Speaker Audio
- Voice CH# Announcement
- DB15 Accessory Interface
- 8 Programmable I/O Ports
- KPG-175D Windows® FPU
- MIL-STD-810 C/D/E/F
- IP-54 Water & Dust Intrusion
- PC Serial Interface
- GPS Receiver Option

● DIGITAL COMMON

- NXDN® Digital Air Interface
- AMBE+2™ VOCODER
- 6.25 kHz Channels
- Over-the-Air Alias (TX Only)
- Paging Call
- Emergency Call
- All Group Call
- Status Messaging
- Remote Stun/Kill
- Remote Check
- GPS Location with Voice
- NXDN® Scrambler Included

● DIGITAL CONVENTIONAL MODE

- 64 Radio Access Numbers (RAN)
- Individual & Group Selective Call
- Conventional IP Networks
- Site Roaming

● SCAN

- Single Zone Scan
- Single Priority Scan

● ANALOG MODE - GENERAL

- 12.5 kHz Channels
- Conventional Zones
- FleetSync®, MDC-1200, DTMF
- QT/DQT/Two-Tone
- Voice Inversion Scrambler (16 Codes)

● FleetSync®

- PTT ID ANI
- Selective / Group Call
- Emergency Status
- Send GPS Data

● MDC-1200

- PTT ID ANI
- Emergency, Radio Check & Inhibit



Options

■ **KMC-30**
Microphone
(Supplied)



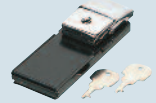
■ **KES-3**
External Speaker



■ **KCT-36**
3m Extension Cable
(for KCT-60)



■ **KMB-10**
Key Lock Adapter



■ **KMC-32**
Keypad Microphone



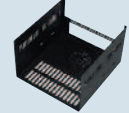
■ **KES-5**
External Speaker
(requires KCT-60 option)



■ **KCT-60**
DB 15-to-15 Pin
Molex Adaptor Cable



■ **KMB-24**
Mounting Case
for KPS-15



■ **KMC-35**
Microphone
(Supplied)



■ **KMC-36**
Microphone
with Keypad



■ **KCT-18**
Ignition Sense Cable
(Requires KCT-60 option)



■ **KLF-2**
Line Filter



■ **KPS-15**
DC Power Supply



All accessories and options may not be available in all markets.
Contact an authorized Kenwood dealer for details and complete list of all accessories and options.

Main Specifications

	NX-740(H)	NX-840(H)
GENERAL		
Frequency Range	136-174 MHz	450-520 MHz
Number of Channels	Max. 32	
Zones	2	
Max. Channels per Zone	16	
Channel Spacing	Analog	12.5 kHz
	Digital	6.25 kHz
Operating Voltage	13.6 V DC \pm 15%	
Operating Temperature Range	-22° F to +140° F (-30° C to +60° C)	
Frequency Stability	\pm 2.0 ppm \pm 1.0 ppm	
Antenna Impedance	50 Ω	
Dimensions (W x H x D)	Projections not included 6.30 x 1.69 x 4.83 in (160 x 43 x 122.6 mm)	
Weight (net)	2.42 lb (1.10 kg)	
FCC ID	K44452600	K44452700

Measurements made per TIA/EIA 603 and specifications shown are typical.
Digital measurements made per CAI measurement procedure.
Specifications are subject to change without notice, due to advancements in technology.

FleetSync® is a registered trademark of JVCKENWOOD Corporation.
AMBE+2™ is a trademark of Digital Voice Systems Inc.
Windows® is a registered trademark of Microsoft Corporation in the United States and other countries.
NXDN® is a trademark of JVCKENWOOD Corporation and Icom Inc.
NEXEDGE® is a trademark of JVCKENWOOD Corporation.

	NX-740(H)	NX-840(H)
RECEIVER		
Sensitivity	Digital	0.28 μ V
	Analog (12 dB SINAD)	0.28 μ V
Selectivity	Analog @ 25 kHz	65 dB
Intermodulation	Analog	75 dB
Spurious Response	Analog	75 dB
Audio Output	4W with less than 5 % distortion	
TRANSMITTER		
RF Power Output	High / Mid / Low	50-25-5 W 45-25-5 W
Spurious Response	70 dB	
FM Hum & Noise	Analog	40 dB
Audio Distortion	Less than 5%	
Modulation	11K0F3E, 4K00F1E, 4K00F1D, 4K00F7W, 4K00F2D	

ACCESSORIES INCLUDED

- KMC-30 Microphone
- DC Cable
- Fuse
- Set of screws
- Mic. Hanger
- Bracket

Supplied accessories may vary depending on the market.

Applicable MIL-STD & IP

MIL Standard	MIL 810C Methods/Procedures	MIL 810D Methods/Procedures	MIL 810E Methods/Procedures	MIL 810F Methods/Procedures	MIL 810G Methods/Procedures
Low Pressure	500.1/Procedure I	500.2/Procedure I, II	500.3/Procedure I, II	500.4/Procedure I, II	500.5/Procedure I, II
High Temperature	501.1/Procedure I, II	501.2/Procedure I, II	501.3/Procedure I, II	501.4/Procedure I, II	501.5/Procedure I, II
Low Temperature	502.1/Procedure I	502.2/Procedure I, II	502.3/Procedure I, II	502.4/Procedure I, II	502.5/Procedure I, II
Temperature Shock	503.1/Procedure I	503.2/Procedure I	503.3/Procedure I	503.4/Procedure I, II	503.5/Procedure I
Solar Radiation	505.1/Procedure I	505.2/Procedure I	505.3/Procedure I	505.4/Procedure I	505.5/Procedure I
Rain*	506.1/Procedure I, II	506.2/Procedure I, II	506.3/Procedure I, II	506.4/Procedure I, III	506.5/Procedure I, III
Humidity	507.1/Procedure I, II	507.2/Procedure II, III	507.3/Procedure II, III	507.4	507.5/Procedure II
Salt Fog*	509.1/Procedure I	509.2/Procedure I	509.3/Procedure I	509.4	509.5
Dust*	510.1/Procedure I	510.2/Procedure I	510.3/Procedure I	510.4/Procedure I, III	510.5/Procedure I
Vibration	514.2/Procedure VIII, X	514.3/Procedure I	514.4/Procedure I	514.5/Procedure I	514.6/Procedure I Cat.20
Shock	516.2/Procedure I, II, III, V	516.3/Procedure I, IV, V	516.4/Procedure I, IV, V	516.5/Procedure I, IV, V	516.6/Procedure I, IV, V
International Protection Standard					
Dust & Water Protection	IP54*				

*Required conditions: Microphone (KMC-35 or KMC-36) is connected; Cap shall be installed on the speaker connector; Cover shall be installed at D-sub connector (15pin); and KCT cable and/or SP cable are not connected.

KENWOOD

Kenwood U.S.A. Corporation
Communications Sector Headquarters

3970 Johns Creek Court, Suite 100, Suwanee, GA 30024-1265

Order Administration/Distribution

P.O. BOX 22745, 2201 East Dominguez St., Long Beach, CA 90801-5745



www.kenwoodusa.com



ISO9001 Registered
Professional Systems Business Group
JVCKENWOOD Corporation

ADS#09314 Printed in USA