



NX-5700H

VHF Digital & FM Analog Mobile Radio



NX-5000HBF Mobiles include:

- High Power Radio
- User Guide

STANDARD

■ GENERAL FEATURES

- 110 W (136-174 MHz) Model
- 110 W (39-50 MHz) Model *1
- 1024 CH-GID / 128 Zones
- Multi-Digital Operation in NXDN/P25
- Support NX-5000 Remote Control Head Options
- Multi-RF Deck Configuration Available (Lovband, VHF, 380-470, 450-520, 7&800)
- Built-in Micro USB A-B Interface
- Horn Alert / Public Address
- Built-in GPS Receiver
- Built-in Bluetooth® Module
- Built-in 56-bit DES Encryption (4 keys programmable by KPG-D1)
- Optional 256-bit AES Encryption
- 12 Watt Audio Output
- DB-25 & Molex 9-pin Accessory Connector
- Active Noise Reduction (ANR)
- KPG-D1N Windows® FPU
- Flash Firmware Upgrading
- MIL-STD-810 C/D/E/F/G

■ DIGITAL – P25 MODE

- P25 Conventional
- P25 Phase 1 Trunking Option
- P25 Phase 2 Trunking Option
- Conv/Trunking OTAR Option
- Packet Data Option for P25 OTAR & GPS
- Conventional Voting Scan Option
- Text Data
- Radio Authentication

■ DIGITAL – NXDN® MODE

- NXDN® Conventional
- NXDN® TYPE-C (Gen1/Gen2) Trunking
- AMBE+2™ VOCODER
- 6.25 & 12.5 kHz Channels
- Over-the-Air Alias
- Over-the-Air Programming (requires KPG-180AP OTAP Manager Software)
- Paging Call
- Emergency Call
- All Group Call
- Status Messaging
- Remote Stun/Kill/Check
- Short & Long Data Messages
- GPS Location
- NXDN® Scrambler

■ ANALOG MODE

- Conventional Zones
- FleetSync®/II: PTT ID ANI, Caller ID Display, Selective/Group Call, Emergency Status, Text Messages
- MDC-1200: PTT ID ANI, Caller ID Display, Emergency, Radio Check & Inhibit
- QT / DQT
- Two-Tone (Conventional Zones Only)
- DTMF
- Built-in Voice Inversion Scrambler

*1. Future Release

OPTIONAL FEATURES & CONFIGURATIONS

■ GENERAL FEATURES

- 4000 Channel ([KWD-5000CH](#))
- Front Panel Programming ([KWD-5001FP](#))
- microSD/microSDHC Memory Card Slot ([KWD-5002SD](#))
- Built-in Bluetooth® Module for Data ([KWD-5003BT](#))
- Remote Control by Subscriber Units ([KWD-5007RC](#))

■ DIGITAL – P25 MODE

- Conventional Features ([Factory Installed](#))
- Phase 1 Trunking Features ([KWD-5101TR](#))
- Phase 2 Trunking Features ([KWD-5101TR](#) & [5102TR](#))
- Conventional OTAR ([KWD-5103RK](#))
- Trunking OTAR ([KWD-5103RK](#) & [5106DT](#))
- Conventional Voting Scan ([KWD-5105VT](#))
- Packet Data required for Trunked OTAR/GPS ([KWD-5106DT](#))

■ MOUNTING & REMOTE CONFIGURATIONS

(Order L-5029-L-5038 for KENWOOD Factory assembling)

- [KCH-19](#) Basic Control Head
- [KCH-20R](#) Featured Control Head
- [KCH-21R](#) Handheld Control Head
- Single Remote Control Head ([KRK Kit](#) & [KCT-71](#) or [KCT-77](#) Cable required)
- Dual Remote Control Heads ([KCH-19/20R/21R](#) & [KRK Kit](#) & [KCT-71](#) or [KCT-77](#) Cables required)
- Multiple RF Decks ([KRK Kit](#) & [KCT-71](#) or [KCT-77](#) Control Cable)



RF Deck Only

MUST purchase necessary accessories separately

NX-5700HBF

NX-5700HBF (110W, 136-174 MHz) RF Deck Only, NXDN Conv/Trunk & P25 Conv
(Remote Control Head, Microphone, Bracket, DC Cable not included)



NX-5700H

VHF Digital & FM Analog Mobile Radio

REMOTE CONTROL KITS

KCH-19M	Basic Control Panel
KRK-14HM	Control Head Interface Kit for KCH-19M
KCH-20RM	Full Featured Remote Control Panel Note: - microSD License (KWD-5002SD) and Bluetooth SPP License (KWD-5003BT) are NOT required for both KCH-20RM and connected RF Decks . KCH-20RM and connected RF Decks can be used of microSD and Bluetooth SPP with NO License Activation. - <u>Remote configuration only</u> . No Internal Speaker included. KES-5/3 is required.
KCH-21RM	Hand Held Control Head for Long Cable <u>*Requires KCT-77M2 (17 ft.)</u> Note: - Bluetooth SPP License (KWD-5003BT) is NOT required for both KCH-21RM and connected RF Decks. KCH-21RM has built-in Bluetooth SPP license that will also activate the connected RF Decks.
KCH-21RM-S	Hand Held Control Head with Short Cable (4 ft.) Note: - Bluetooth SPP License (KWD-5003BT) is NOT required for both KCH-21RM and connected RF Decks. KCH-21RM has built-in Bluetooth SPP license that will also activate the connected RF Decks.

CABLES

KCT-23M2	DC Cable (75/110W) 10 feet
KCT-23M4	DC Cable (75/110W) 23 feet
KCT-71M2	Remote Control Cable (17 feet)
KCT-71M3	Remote Control Cable (25 feet)
KCT-71M4	Remote Control Cable (1.6 feet)
KCT-71A50	KCT-71A Extended Control Head Cable (up to 50 ft. max.) Note: Please specify exact length at 1ft. increments when ordering. Caution: Extended control head cables exhibit a loss in speaker audio power to the control heads.
KCT-71A100	KCT-71A Extended Control Head Cable (up to 100 ft. max.) Note: Please specify exact length at 1ft. increments when ordering. Caution: Extended control head cables exhibit a loss in speaker audio power to the control heads.
KCT-77M2	Remote Control Cable for KCH-21RM (17 feet)
KCT-90USB	USB Mobile Cable for SD Card Direct Access Support Note: microSD function requires KWD-5002SD license.
KCT-91MRS	DB25 Cable for Mobile Relay Station (Conventional Only) Note: - Mobile Relay Station requires Multi RF Deck Configuration. The cable requires between Decks. - Built-in GPS and Bluetooth are not available with Mobile Relay Station.

MOBILE INSTALLATION ACCESSORIES

KCT-72M	External Accessory Connection Cable for KCH-19M / KCH-20RM
KLF-2	Line Filter (suppresses alternator whine, 25dB, 25A max).
KMB-36	Mounting Bracket for NX-5000 High Power RF Deck
KRA-40GM	GPS Antenna

CONTROL STATION INSTALLATION ACCESSORIES

KMC-9C	Control Station Desktop Microphone (8-pin mod. plug) Note: NOT compatible with TDMA operations
KMC-59C	Control Station Desktop Microphone (8-pin mod. plug) Note: Compatible with FDMA (analog / NXDN) and TDMA operations (P25 Phase 2 and DMR)



NX-5700H

VHF Digital & FM Analog Mobile Radio

MICROPHONES AND SPEAKERS

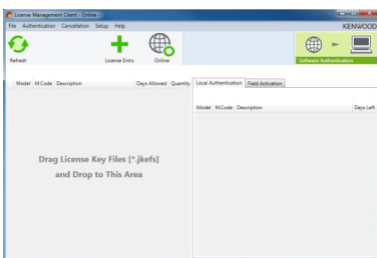
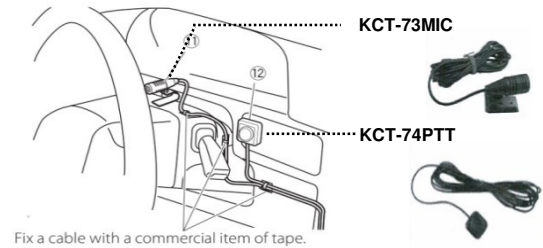
KMC-35	MIL-SPEC Standard electret mobile microphone (8-pin mod. plug)
KMC-36	MIL-SPEC Standard electret mobile microphone with 12 keypad (8-pin mod. plug)
KES-5	External speaker, 40W max input Note: requires KAP-2 (PA/HA unit) or KCT-72M (connection cable) installed.
KCT-73MIC	External Microphone kit w/ 9.8 ft. cord for Safer Driving
KCT-74PTT	External PTT Switch kit w/ 9.8 ft cord for Safer Driving

Hands-free operation

To promote driver safety and meet hands-free regulations in certain regions, NX-5000 series mobile offers external microphone and PTT as options.

NOTE: Connecting to the radio via DB25 terminal on backside of RF Deck or via optional KCT-72 "Connection Cable" on backside of KCH-19M and KCH-20R*.

KCT-73MIC is not compatible with other NX/TK-mobile radios.



Note: KPT-300LMC is compatible with Windows Vista/7/8/8.1/10 Only. Windows XP



KPT-300LMC

License Management Client

KPT-300LMC is a required software package that is used to authenticate **software** (FPU) and **radio feature license** keys for the NX-5000 Series radios.

KPT-300LMC is available as a free download from our website and is also supplied with applicable software, such as KPG-D1K, KAS-12, and KPG-AE1/DE1.

NOTE: A license key is required for the KPT-300LMC to authenticate the software prior to use. To receive a license key, complete the enclosed "**Account Request Form**" and return to the Land Mobile Order Desk.

License Keys will be E-Mailed to the address provided on the Account Request Form.

KPT-300LMC	License Management Client	NC	NC
L-5000	Account Registration Key Note: specify the number of PC's used for Radio Feature License Activation.	NC	NC

SOFTWARE LICENSE OPTIONS

TO PLACE AN ORDER FOR SOFTWARE:

1. Complete a **Software License Key Request Form**.
2. Submit along with your PO to the Land Mobile Order Desk via:
 - a) E-Mail: coca@us.jvckenwood.com
3. License Keys will be E-mailed to the address provided on the order form. A hard copy will follow by mail for your records.

Note: A unique license key is required for each PC with software installed. A single license key will not authorize multiple PCs.

FIELD PROGRAMMING UNIT (FPU)

KPG-D1K	License Key for KPG-D1K Programming Software for NX-5000 Portable/Mobile (Windows® Vista/7/8/8.1) Note: Requires KPT-300LMC for authentication
---------	---



NX-5700H

VHF Digital & FM Analog Mobile Radio

FIELD PROGRAMMING UNIT (FPU)

P25 Trunked Programming Capability (licensed by either 1 or 2 below):

1. USB Key Type: Advanced System Key (ASK)- See KWD-ASK-MK and AK

- For NX-5000 series radios.
- KWD-ASK-MK (Master Key): For trunked system operator (SYSOP). Required for activating KWD-ASK-AK Access keys. Securely embeds/encrypts the HSID.
- KWD-ASK-AK (Access Key): For Dealers/contractors. Activated by KWD-ASK-MK Master Key.
- KPG-D1K supports up to 16 KWD-ASK-AK Access Keys (16 trunked networks).

2. Software Key Type: System Key File (SKF)- See L-5005

- For NX-5000 series radios.
- 3-digit HEX System ID (HSID) with verifiable written authorization required from SYSOP.
- Utilized by both SYSOPs and Dealers/Contractors. But Dealers/Contractors must be permitted from SYSOP to order and use SKF.
- Kenwood ships an encrypted *.SKF file via E-Mail to the address provided on the P25 Trunking System Keys Request Form.
- The *.SKF securely embeds/encrypts the HSID.

OVER THE AIR PROGRAMMING (OTAP)

KPG-180AP OTAP Manager Software (Windows® Vista/7/8/8.1/10)
 • License includes Fifty (50) radios / One(1) **NXDN** Conventional and Type-C **Air** Communication Profile and One(1) **NXDN** Conventional and Type-C **IP** Communication Profile

Note:

- Requires KPT-300LMC for authentication
- Radio to Radio OTAP for P25 Conventional system requires KWD-AP3-P25 license.
- NEXEDGE Type-D Trunking and DMR System not supported.

SOFTWARE UPGRADE LICENSES FOR KPG-180AP

Note: Includes package license for additional subscriber unit or license for additional profile attached to one computer running KPG-180AP software. All additional licenses require KPT-300LMC for authentication.

KWD-AP5100	Additional 100 Radio Package License for 1 PC Note: License includes 100 subscriber radios OTAP License.
KWD-AP5250	Additional 250 Radio Package License for 1 PC Note: License includes 250 subscriber radios OTAP License.
KWD-AP5500	Additional 500 Radio Package License for 1 PC Note: License includes 500 subscriber radios OTAP License.
KWD-AP1-CA	Additional NXDN Conventional Type-C Air Communication Profile for 1 PC. Note: Price is per license on quantities of less than 16 licenses. Used as NEXEDGE Base Station Serial Interface for both Conventional and Trunking (Type-C Gen1/Gen2).
KWD-AP2-CP	Additional NXDN Conventional Type-C IP Communication Profile for 1 PC. Note: Price is per license on quantities of less than 16 licenses. Used NEXEDGE Repeater IP Interface for both Conventional and Trunking (Type-C Gen1/Gen2) .
KWD-AP3-P25	P25 Radio to Radio Air Communication Profile for 1 PC. Note: Price is per license on quantities of less than 16 licenses. Used as P25 Base Station Serial Interface for only Radio to Radio Communication.

-- IMPORTANT NOTES--

Base radios are connected to a computer using the KPG-36XM USB adapter for portables, or a KPG-46XM for mobiles.
 Requires firmware version 1.4 or higher for the NX-5000 Series portables and mobiles
 Requires firmware version 2.5 or higher for the NXR-x00/NXR-x10 repeaters.
 Requires firmware version 1.0 or higher for the NXR-5xxx repeaters



NX-5700H

VHF Digital & FM Analog Mobile Radio

RADIO FEATURE LICENSE OPTIONS

PCs registered under the same KPT-300LMC Account Registration Key (License Key) will be able to authentic Radio Features that can then be viewed / shared / managed by all registered users for the account.

*** TO PLACE AN ORDER FOR RADIO FEATURE LICENSES:**

1. Complete a Radio Feature Request Form.
2. Submit the completed form along with your PO to the Land Mobile Order Desk via:
 - a) E-Mail: coca@us.jvckenwood.com
3. License Keys will be E-mailed to the address provided on the request form. A hard copy will follow by mail for your records.

Note: Radio Feature License Keys are transferable from one radio to another radio within 72 hours of activation. If a Radio Feature License is transferred to another radio within the 72 hour window, the 72 hour clock is reset.

Offline Authentication Option

KWD-OFL-USB	USB License Storage Hardware key for Radio Feature License <u>Note:</u> - Must purchase Radio Feature Licenses separately. - Can be used with only one (1) Account Registration Key. - Requires KPT-300LMC V1.10 or higher. - Cancellation rule is difference with standard Online/Offline Authentication. Please refer to a leaflet bundled with KWD-OFL-USB. <u>Warranty Information:</u> - Damaged USB License Storage "KWD-OFL-USB" a. Remaining Licenses will not be warranted. b. Licenses not uploaded to the License Management Server will not be warranted.
-------------	--

General Radio Features

KWD-5000CH	License Key for 4000 Channel Expansion
KWD-5001FP	License Key for Front Panel Programming
KWD-5002SD	License Key for microSD Memory Card Slot Activation
KWD-5003BT	License Key for Bluetooth Data (Required for Data Communication) <u>Note:</u> Voice Communication for Bluetooth Head Set does NOT require KWD-5003BT. You can pair with any Bluetooth audio device without this option.
KWD-5007RC	License Key for Remote Control by Subscriber Units <u>Note:</u> - P25 Mode is <u>NOT</u> available. - This license may be used by Administrator due to Stun/Revive/Kill. - The license is required for only Transmitting of Remote Control. - PC command for Remote Control does <u>NOT</u> require the license.

P25 Radio Features

KWD-5101TR	License Key for P25 Phase 1 Trunking <u>Note:</u> Required for Link Layer Authentication
KWD-5102TR	License Key for P25 Phase 2 Trunking (requires KWD-5101TR)
KWD-5103RK	License Key for P25 OTAR (requires KWD-5106DT for a Trunking Operation)
KWD-5105VT	License Key for P25 Conventional Voting Scan
KWD-5106DT	License Key for P25 Trunking OTAR / GPS Note: Conventional (OTAR/GPS) DO NOT require KWD-5106DT.



NX-5700H

VHF Digital & FM Analog Mobile Radio

Encryption & Option Modules

KWD-AE30K	<p>AES FIPS140-2 & DES Encryption Module (Multi-Key) Order a Labor Code L-5003 if installation is required. KWD-AE30K requires: a Motorola KVL3000 Plus/4000 key loader device. KWD-AE30K is an U.S. DOC/BIS Export Controlled Item (ECCN 5A002A.1). Note: Required for Link Layer Authentication [Intrinsically Safe Option]- Must be Kenwood installed for I.S.</p>
KWD-AE31K	<p>AES & DES Encryption Module (Multi-Key) Order a Labor Code L-5004 if installation is required. Note: Requires KPG-AE1/DE1 software key loader or Motorola KVL3000 Plus/4000 key loader device. KWD-AE31K is an U.S. DOC/BIS Export Controlled Item (ECCN 5A002A.1) Note: Required for Link Layer Authentication [Intrinsically Safe Option]- Must be Kenwood installed for I.S.</p>
KPG-AE1K	<p>AES/DES Encryption Software Key Loader for KWD-AE31K Authentication by KPT-300LMC is required Note: KPG-AE1 is a U.S. DOC/BIS Export Controlled Item (ECCN 5D002A)</p>
KPG-DE1K	<p>DES Encryption Software Key Loader for KWD-AE31K Authentication by KPT-300LMC is required Note: KPG-DE1 is a U.S. DOC/BIS Export Controlled Item (ECCN 5D992A.1)</p>

FleetSync® & NEXEDGE® AVL & MESSAGING

KAS-10	<p>FleetSync & NEXEDGE AVL & Messaging Software with NEXEDGE Trunking VoIP Dispatch Note: - Users can chose to operate Messaging, AVL or VoIP or all three if desired. Compatible with Windows® XP, VISTA & 7 and Microsoft® MapPoint®2006/2009/2010 (certain format bitmap images can be imported). Refer to KAS-10 product spec sheets and manuals for details. - NEXEDGE Gen2, Type-D Trunking and DMR System not supported.</p>
--------	--

SERVICE RELATED ACCESSORIES

KPG-46XM	<p>Full Speed USB Programming interface cable Note: This cable with USB mode may be used for SD Card Direct Access.</p>
KPG-115	<p>Encryption Key Loader Interface Cable for Motorola KVL-3000/3000 Plus/4000</p>
KPG-115AUT	<p>KVL-4000 Radio Authentication Cable Note: Only capable for P25 Radio Authentication. Not available for Encryption Key Loading.</p>
KWD-ASK-AK	<p>Access Key for KPG-D1K P25 trunked programming Notes: Enables P25 Trunked system programming privileges in a KPG-D1K. <ul style="list-style-type: none"> • For NX-5000 series only • Must be activated by trunked system operator (SYSOP) with KWD-ASK-MK Master Key • Must have KPG-D1K • Configurable expiration period of KWD-ASK-AK set by KWD-ASK-MK is available for 3 years for built in battery. USB Key must be replaced since the expiration set up dose not work after 3 years. </p>
KWD-ASK-MK	<p>Master Key for activating KWD-ASK-AK Access Keys - Restricted Purchase Requirements - Notes: <ul style="list-style-type: none"> • For NX-5000 series only. • Sold to trunked system operator (SYSOP) or SYSOP authorized entities only • Must have KPG-D1K • SYSOP must provide 3-digit HEX HSID to Kenwood with P25 Trunking System Keys Request Form. • Purchase KWD-ASK-AK Access Keys if needed. </p>

INSTALLATION / TUNING CHARGES

L-5001	<p>Factory Activation of Radio Feature Licenses (per Radio) Note: Must purchase Radio Feature Licenses separately. KPT-300LMC's History Menu will not display the Radio Features activated by Factory.</p>
L-5006	<p>NX-5700/5800 Programming (with basic TX/RX check)</p>



NX-5700H

VHF Digital & FM Analog Mobile Radio

INSTALLATION / TUNING CHARGES, CON'T

L-5005	<p>KPG-D1K System Key File (SKF)</p> <p>Note: Enables P25 Trunked system programming privileges in a KPG-D1K.</p> <p>- Restricted Purchase Requirements -</p> <ul style="list-style-type: none"> • Trunked system operator (SYSOP) must provide 3-digit HEX HSID to Kenwood with P25 Trunking System Keys Request Form. • Must have KPG-D1K. • Kenwood ships an encrypted *.SKF file via E-Mail to the address provided on the P25 Trunking System Keys Request Form. • Non-SYSOP entities ordering L-5005 must provide verifiable written authorization from SYSOP to receive an *.SKF file. • 3-digit HEX HSID are securely encrypted & embedded in the *.SKF file.
---------------	--

L-5051	P25 CAP Compliance of Non-Encrypted Radio - Disable Built-in DES
---------------	--

-- IMPORTANT NOTES regarding ENCRYPTION MODULES--

Encryption modules, key loaders and radios containing encryption are export controlled by the U.S. Department of Commerce Bureau of Industry & Security EAR regulations and may either require an Export License, are eligible for a License Exception (ENC) or are exportable with No License Required (NLR) depending on the country, the consignee and the intended use. High level encryption is a special commodity that may require an export license to most countries. See www.bis.gov for more information regarding export regulations. DO NOT SHIP encryption items outside the U.S. without proper DOC/BIS Export Licenses and/or compliances.

Kenwood may request the following information to be submitted at time of order (this information must meet Kenwood internal approvals prior to shipment even if being returned to Kenwood later:

a) Initial Destination: Initial delivery point if different from Ultimate Destination

(customer distribution center, headquarters, dealership, manufacturer's representative)

* Business/Agency Name:

* Address:

* Contact Person Name:

* Contact Phone:

b) Ultimate Destination: Final delivery point(s); deployment/distribution

* Business/Agency Name:

* Address:

* Contact Person Name:

* Contact Phone:

c) Intended Use of Radios: Law enforcement, security, operations, etc.

KWD-AE30 AES FIPS140-2 SCM , NIST Validation & Customer Shipping

A secure delivery method direct to the end user customer is required by the NIST AES FIPS 140-2 validation rules. For U.S. Federal Government entities the SCM must ship from Kenwood USA Corporation directly to the end user customer by a trusted carrier (FEDEX, UPS or a designated Kenwood USA Corporation employee); shipping/handling by a dealer or other entity is not acceptable. This may or may not be required by local/state government agencies or business/industrial users. Please check with the end use customer about their AES encryption handling requirements before ordering. Kenwood will not be responsible for shipments of KWD-AE30K modules to erroneous destinations specified on an order.