

**2020 HF Email station with internet and fax gateway - external modem**

A fast, error corrected, HF Email system with an internet and fax gateway.

**Note:-** A suitable PC or laptop and suitable antenna system is required to complete this station.



Part Number	Packaging Type	Net Weight	
BC202002	SC3	8.20 kg	



**Note :-** See brochure for more detailed information.

**Includes:-**

2023 Clover 2000 HF Data modem	BC202300			
2050 HF Transceiver fitted with required options	BC205000			
2022 Mains power supply	BC202200			
Fan unit	BCA20002			
Cable 2023 Modem to 2050 Transceiver	BCA90021			
Cable 2023 Modem to computer	BCA202300			
USB to serial adaptor	BCA92318			
2020 HF Email station with internet gateway software	BCA202005			
3U Side - plate pack	BCA20019			

2020 Email fax & data system - internal modem package

2020 HF Email station with internet and fax gateway - internal modem

A fast, error corrected, HF Email system.

**Note:-** A suitable PC or laptop and suitable antenna system is required to complete this station.



Part Number	Packaging Type	Net Weight
BC202008	SC3	6.20 kg



**Note :-** See brochure for more detailed information.

**Includes:-**

2023 Clover 2000 HF Data modem internal fit PCB	BC202301		
2050 HF Transceiver fitted with required options	BC205000		
2022 Mains power supply	BC202200		
Fan unit	BCA20002		
Programming cable	BCA90023		
USB to serial adaptor	BCA92318		
2020 HF Email station with internet gateway software	BCA202005		

**2024 Clover 2000 HF Fax system - one station**

A fully error corrected HF Link between two G3 Fax machines.

**Note:-** A suitable antenna system and G3 Fax machine is required to complete this station.

**Note :-** See brochure for more detailed information.

**Includes:-**

2024 Clover 2000 HF Fax modem

2050 HF Transceiver fitted with required options

2022 Mains power supply

RJ-45 cable, 2024 Modem to G3 fax

Fan unit

Cable 2024 Modem to 2050 Transceiver

2024 Clover 2000 HF Fax system operators manual

3U Side - plate pack

USB to serial adaptor

Cable 2023 Modem to computer

2020 HF Email station with internet gateway software



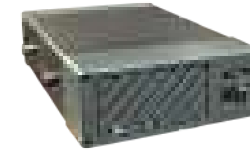
Part Number	Packaging Type	Net Weight	
BC202410	SC3	9.0 kg	
BC202400			
BC205000			
BC202200			
SA-09093			
BCA20002			
BCA90021			
BCM20240			
BCA20019			
BCA92318			
BCA202300			
BCA202005			

**2023 Clover 2000 HF Data modem**

Option for 2030	Option for 2050	Part Number	Packaging Type	Net Weight	
	x	BC202300	C2	2.15 kg	

**Includes:-**

- Cable 2024 Modem to 2050 Transceiver P/N BCA90021
- Cable 2023 Modem to computer P/N BCA202300
- USB to serial adaptor P/N BCA92318
- 2020 HF Email with internet and fax gateway software P/N BCA202005



BC202300



BCA202005



BCA90021



BCA202300



BCA92318

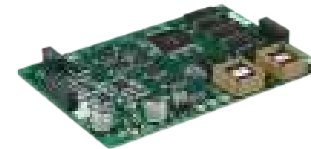
**2023 Clover 2000 HF Data modem internal fit PCB**

	x	BC202301	C4	0.40 kg	
--	---	----------	----	---------	--

Fits internally in 2050, requires 2020 Software to operate.

**Includes:-**

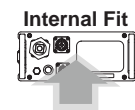
- Serial cable P/N BCA90023
- USB to serial adaptor P/N BCA92318
- 2020 HF Email with internet and fax gateway software P/N BCA202005



BC202301



BCA202005



Internal Fit



BCA90023



BCA92318

**2024 Clover 2000 HF Fax and data modem**

Option for 2030	Option for 2050	Part Number	Packaging Type	Net Weight	
	x	BC202400	C2	2.95 kg	

Requires G3 fax machine for point to point fax operation and can also be used with 2020 Software.

**Includes:-**

- Cable 2024 Modem to 2050 Transceiver P/N BCA90021
- RJ-45 cable, 2024 Modem to G3 Fax P/N SA-09093
- Cable 2024 Modem to computer P/N BCA202300
- USB to serial adaptor P/N BCA92318
- 2024 Clover 2000 HF Fax system operator's manual P/N BCM20240
- 2020 HF Email with internet and fax gateway software P/N BCA202005



BC202400



BCA90021



SA-09093



BCA202300



BCA92318



BCM20240



BCA202005

**Cable 2023 Modem to computer**

Option for		Part Number	Packaging Type	Net Weight	
2030	2050				
	x	BCA202300	C4	0.15 kg	

With 9 / 25 pin adaptor and USB to serial adaptor.

**Note:-** This cable has connections for DTS and RTS and cannot be used as a 2050 Programming cable or with the 977 Tracking package.


**Base station computer package**

	x	BCA202010	N/A	9.50 kg	
--	---	-----------	-----	---------	--

Minimum specification.

**Includes:-**

- Current speed desktop PC computer
- Hard drive, CD ROM
- Com. ports
- 15" monitor
- Windows operating system installed
- Computer handbooks

**Note:-** International brand name desktop PC computers are supplied to ensure availability support and maintenance.

**Field station computer package**

	x	BCA202011	N/A	2.55 kg	
--	---	-----------	-----	---------	--

**Includes:-**

- Current speed laptop / notebook
- Hard drive, CD ROM
- Serial port
- Power adaptor and cords
- Windows operating system installed
- Computer handbooks

**Note:-** International brand name laptop / notebooks are supplied to ensure availability support and maintenance.

