



# **RADAR BASED SECURITY SYSTEMS**

## **DRONE DETECTION**



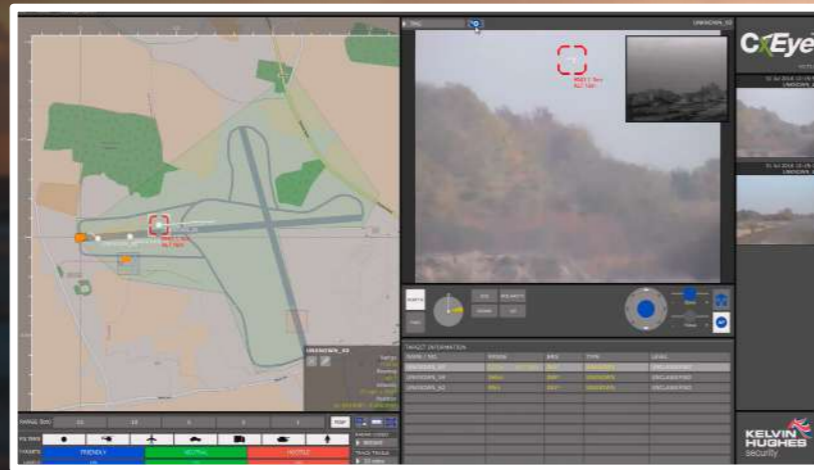
**SITUATIONAL INTELLIGENCE, THE WORLD OVER**

# IN A CHANGING WORLD NEW CHALLENGES **ARISE**



Drone incursions are an increasing threat in a variety of environments.

Whether the concern is for public safety, personal privacy, movement of contraband or the security of physical assets - all these can be threatened by the use of aerial drones.



## SMS-D

COST-EFFECTIVE AERIAL DOMAIN AWARENESS

UAS DETECTION AND CLASSIFICATION

TARGET ALTITUDE DATA

DUAL SCREEN CAPABILITY

INTEGRATED VIDEO TRACKING

CONTINUOUS 360° RADAR

MULTIPLE TARGET TRACKING

SIMULTANEOUS GROUND AND AERIAL SURVEILLANCE

SCALABLE SOFTWARE ARCHITECTURE

SMS-D is the first integrated medium-range radar-based surveillance system to address the need for the detection and tracking of small aerial threats.

The Single Mast Solution (SMS) set a new standard for cost-effective 360° situational awareness, providing a seamless radar and E/O picture in a complete, fully integrated and scalable package. Built around our proven SharpEye™ X-Band solid state radar transceiver technology, the SMS concept continues a tradition of addressing evolving operational challenges with robust, original and practical solutions.

SMS-D combines these benefits with integrated video tracking to provide a cost-effective solution for tracking the real-time position of aerial targets ranging from small commercial drones to helicopters

which may pose a threat to infrastructure, vehicles or personnel.

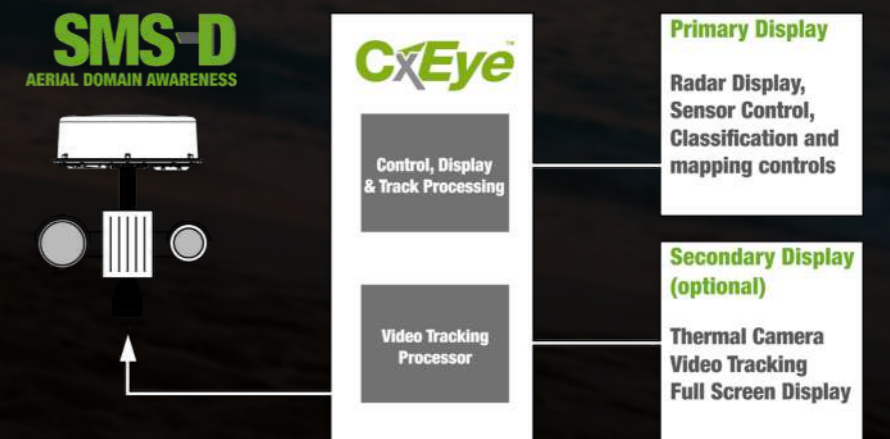
The Kelvin Hughes SMS-D drone detection system provides Unmanned Aerial System (UAS) situational awareness, with Bearing, Range, Altitude and Velocity data presented to the operator and optionally distributed to other systems enabling informed response decision-making.

Kelvin Hughes' intuitive CxEye™ display and control software has been enhanced for SMS-D to include aerial surveillance-specific features, maintaining for the user all the flexibility of CxEye's modular and scalable design philosophy. Integrated multi-sensor networks can be deployed very simply, with expansion potential.

In an operator station, CxEye™ can now utilise one or two displays as required, allowing for full screen monitoring of both video and radar pictures.

Extended target classification and tote management features enable the user to clearly distinguish ground targets from those in the air, and maintain clear situational awareness when things get busy.

Kelvin Hughes' SMS-D is a fully integrated package of sensors and software providing a cost-effective and easy-to-use, yet sophisticated response to the growing threat of drone incursion.





SEC-1012 | ISSUE 1

Images in this brochure are subject to copyright (all rights reserved)  
© Kelvin Hughes Limited

**Kelvin Hughes Ltd**

Voltage, Mollison Avenue,  
Enfield EN3 7XQ, UK  
t: +44 (0)1992 805300  
e: surveillance@kelvinhughes.com

[www.kelvinhughes.com](http://www.kelvinhughes.com)

**Kelvin Hughes LLC**

631 South Washington Street, Alexandria VA 22314, USA  
t: +1 703 548 4007

**Kelvin Hughes Pte Ltd**

20 Harbour Drive, #07-04 PSA Vista,  
Singapore 117612  
t: +65 6545 9880