

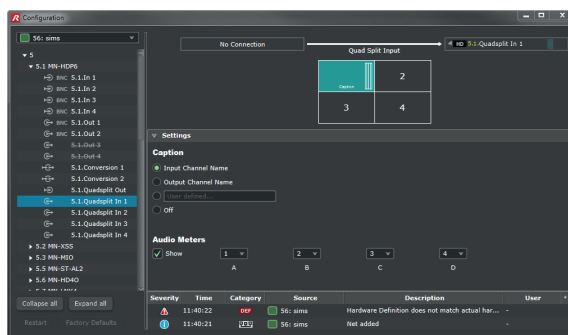
MEDIORWORKS – Intuitive Real-Time Configuration, Control & Monitoring

The intuitive configuration, control and monitoring software MediorWorks can be downloaded from any MediorNet mainframe via the Configuration Port of the Processing Card. This way you always have access to the correct software version of a specific installation. The software is a Java™ based application, allowing any computer with a Java™ Runtime environment such as Windows, Mac OS X or Linux to serve as the host for the application. MediorWorks auto senses the configuration and status of the system it is connected to. Five windows give easy access to any aspect of the MediorNet installation. All windows are visible at the same time. Alternatively, they can easily be accessed via one mouse click on the “Views”-window, which is floating above all other windows. The “Device Browser” shows all available nodes,

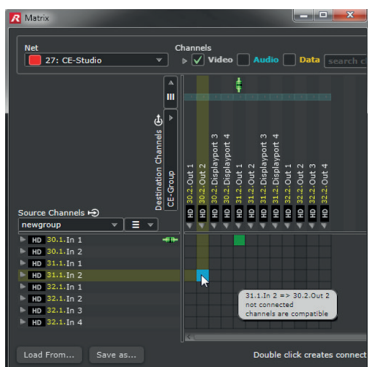
the cards installed in the node and each connector of the specific media card. If a connector is selected, the “Connections”-window shows the active connections and how the signal is routed to the destination(s). A “Matrix View” allows for a quick overview of all connections including matrix-style programming. Looking into the “Parameters”-window of a link card gives access to the fiber usage of a specific fiber link. In the “Parameters”-view of a media card you can see and adjust the signal format, force the input or output to a certain format and configure the processing and conversion features available within MediorNet. Detailed “Logging” and “Alarm” views complete the software’s feature set. Detailed user rights management and user specific view modes allow for easy and secure operation.

MediorWorks at a Glance:

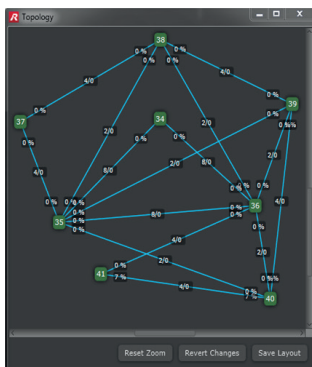
- » Java™ Runtime application downloadable from any MediorNet frame
- » Auto sensing – no need for manual configuration
- » Real-time monitoring and control of the complete network
- » Intuitive, clearly managed windows with quick access to any information via list filters
- » Manual und automatic routing
- » Multi-user support
- » Matrix view
- » User templates
- » Graphical Network Topology View



Configuration View for MN-HDP-6



The Matrix View of MediorWorks



Topology



System Explorer